

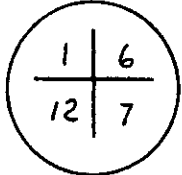
048449

RECEIVED
LARAMIE COUNTY
CHEYENNE, WY.

CERTIFIED LAND CORNER RECORDATION 8 SEP 6 AM 10 27

DESCRIPTION OF CORNER EVIDENCE FOUND, AND ORIGINAL RECORD (If known)

R-62-W | R-61-W



Found 3" Iron Post with Brass Cap as described
in G.L.O. Notes.

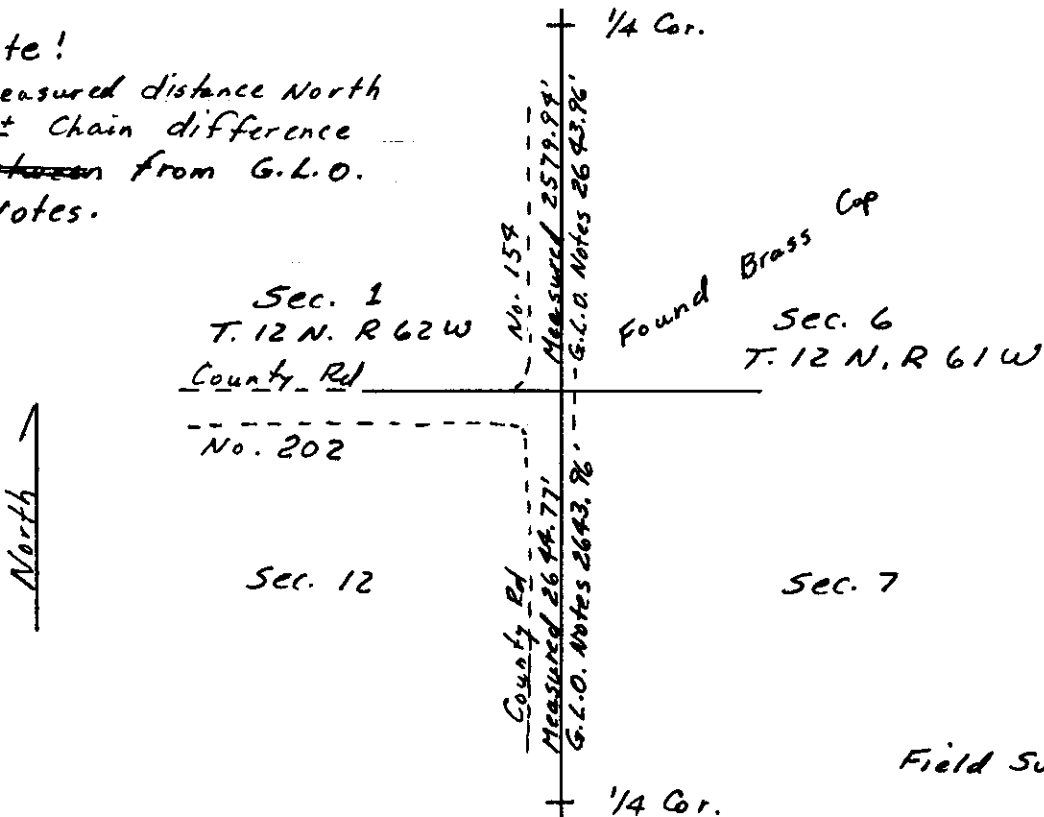
T-12-N

DESCRIPTION OF MONUMENT AND ACCESSORIES ESTABLISHED
TO PERPETUATE THE ORIGINAL LOCATION OF THIS CORNER:

SKETCH, WITH COURSE AND DISTANCE TO ADJACENT CORNER IF DETERMINED IN THIS SURVEY.
(May Sketch or Paste Reproduction on Reverse Side.)

Note!

Measured distance North
1± Chain difference
between from G.L.O.
Notes.



I, Edward C. Fry certify that I have carefully performed ~~or reviewed~~ the work done on the diagrammed corner as reported on this recordation form and approve the same.

Edward C. Fry P.E./L.S. 662
Signature of Surveyor Registration No.

STATE OF WYOMING,
Office of Clerk and Recorder,
County of Laramie

This "corner record" was filed for record on the 6th day of September, 1988, was noted on the cross-index plat and is assigned page No. 1362, in book No. 1264.

James C. Whithead
County Official
Cross Index No. _____ T. _____ R. _____ Mer. _____
_____ T. _____ R. _____ Mer. _____
_____ T. _____ R. _____ Mer. _____
_____ T. _____ R. _____ Mer. _____
_____ T. _____ R. _____ Mer. _____
_____ T. _____ R. _____ Mer. _____